

Windows: Selecting Output Audio Device

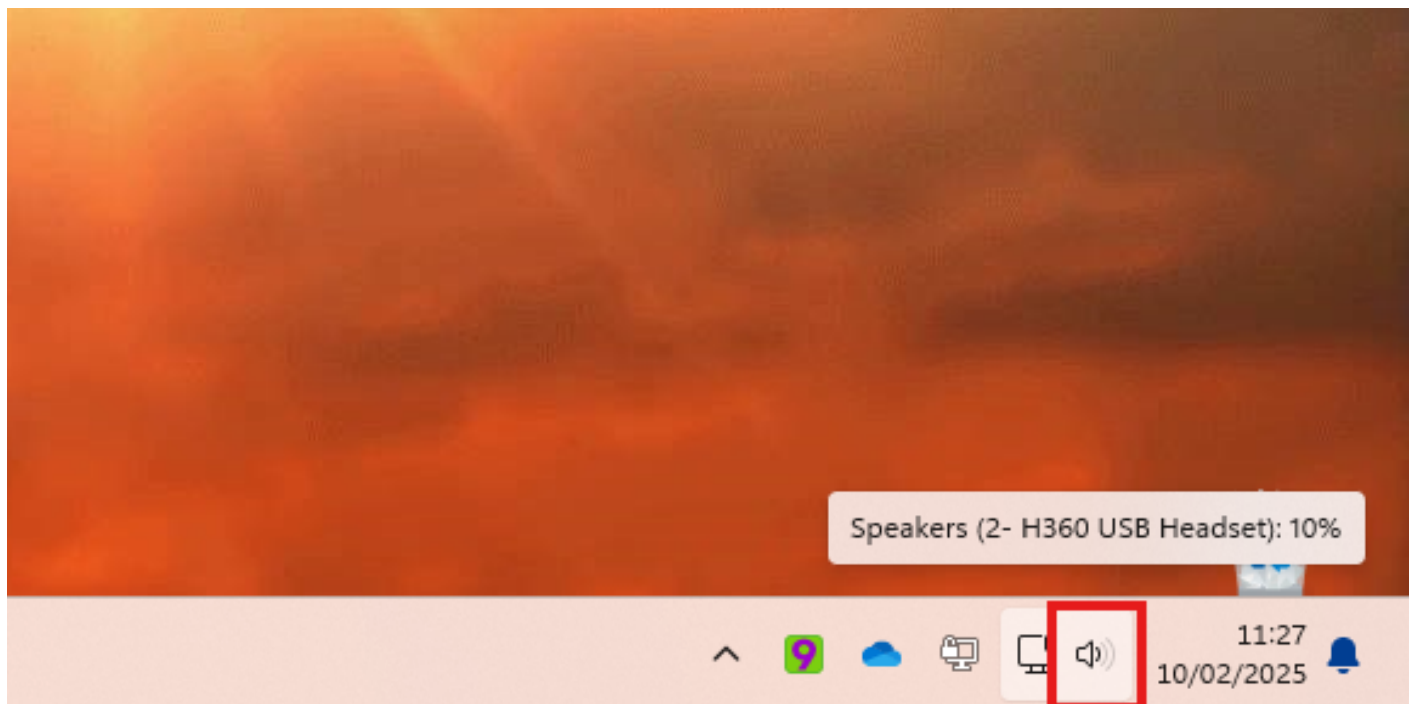
What will be covered:

- How to Select the appropriate audio output device

Reason: One reason to select the right output device is Windows might of auto-selected the wrong output device and now the audio is being outputted from your monitor instead of the headphones.

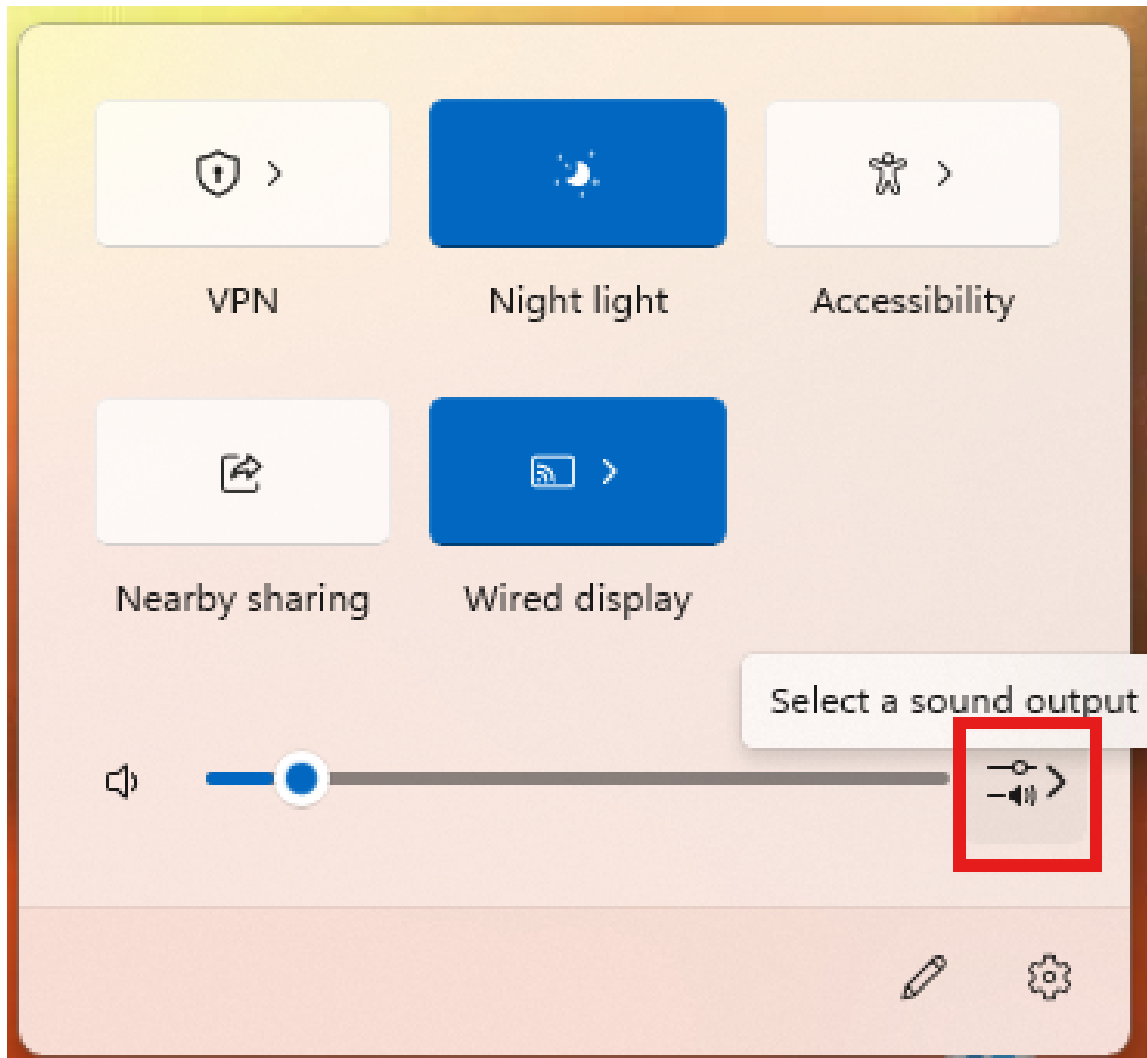
1. Open Quick Panel

Locate the quick panel at the **bottom right** of your screen and open it.



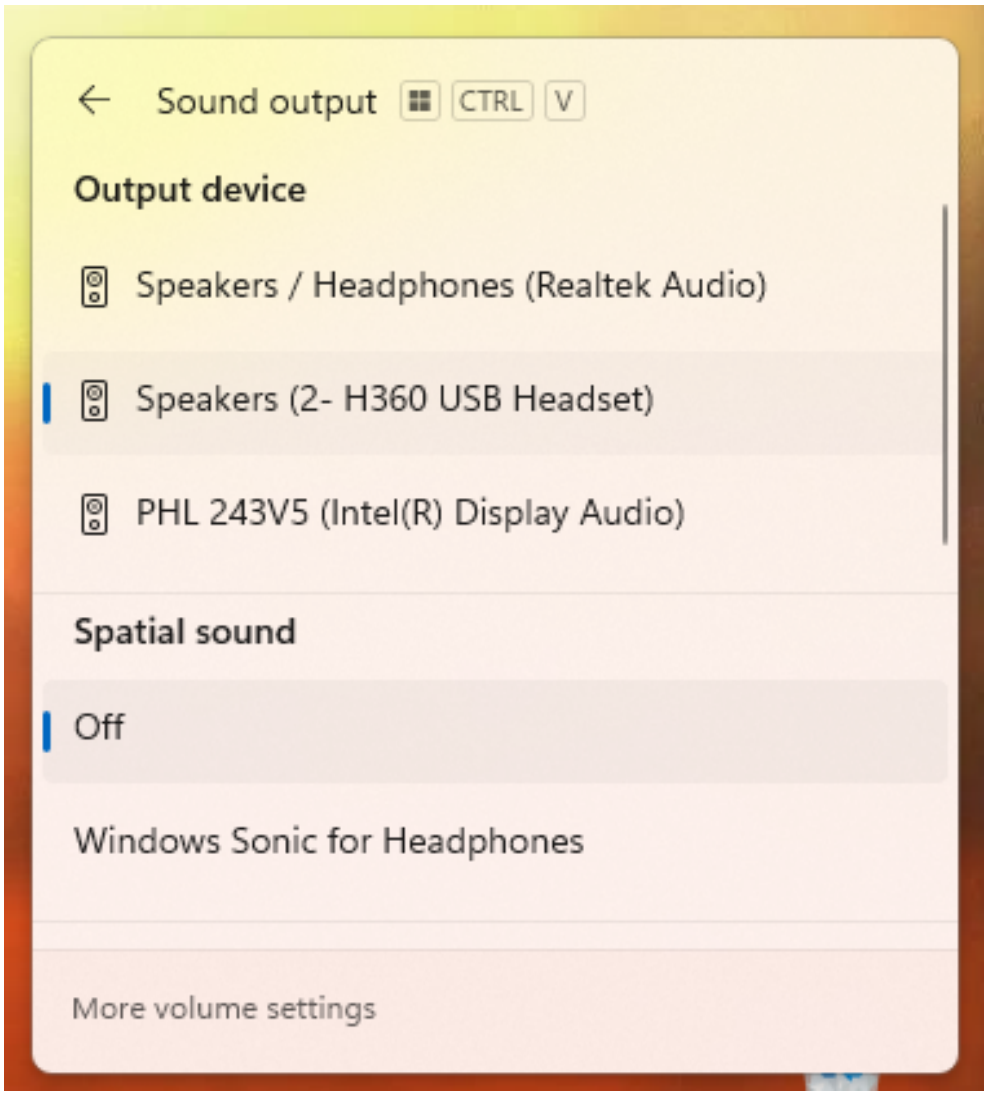
2. Open Sound Output Menu

Click the "**Sound Output menu.**"



3. Select & Test

Whatever Windows has recognized of sound output devices will be displayed **under the Output device**. Select the appropriate output device so that audio can be outputted to that device instead of another.



Revision #4

Created 10 February 2025 11:25:44 by Broadband9Admin

Updated 21 February 2025 15:04:50 by Broadband9Admin