

# Windows: Remote Access

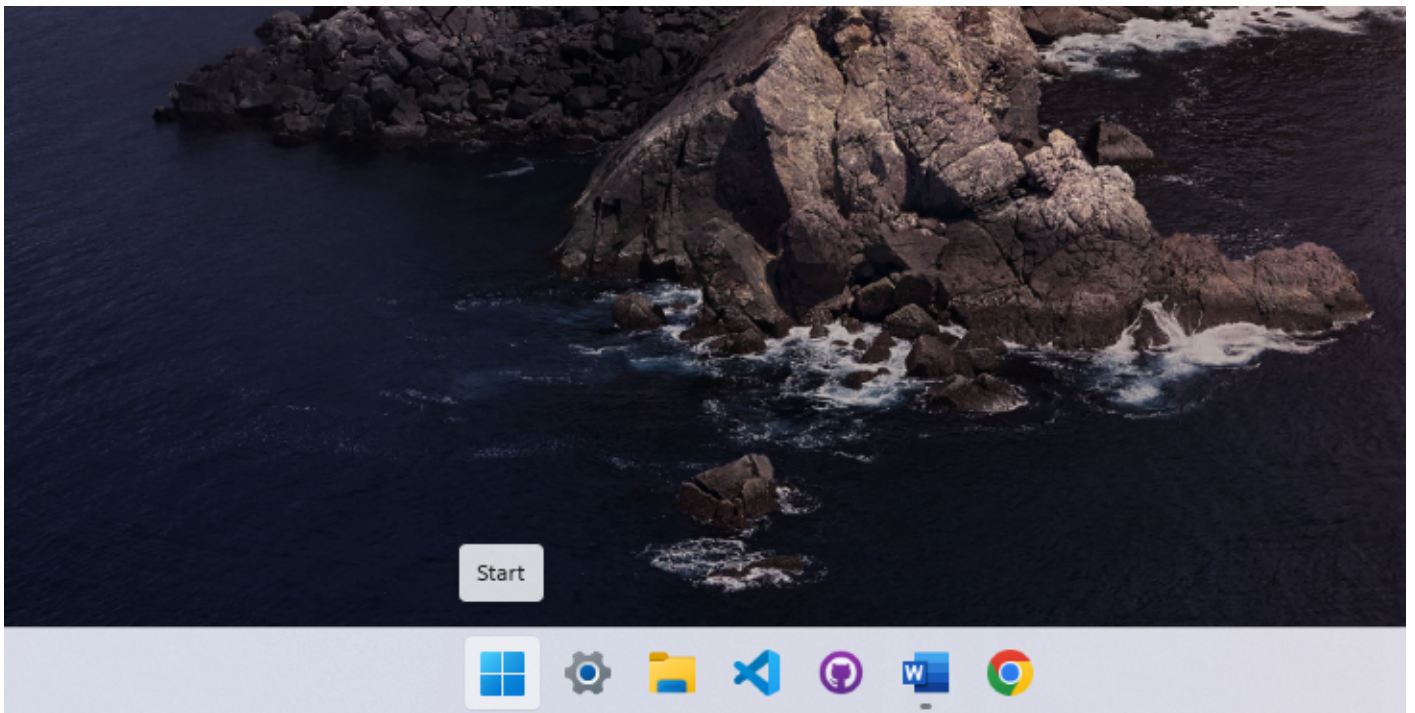
## Quick Assist: Your Built-In Solution for Remote IT Support

Quick Assist is a Windows built-in remote software that enables IT support engineers to quickly connect to your machine and resolve IT issues remotely. Setting it up is simple and takes just a minute. Follow these easy steps:

---

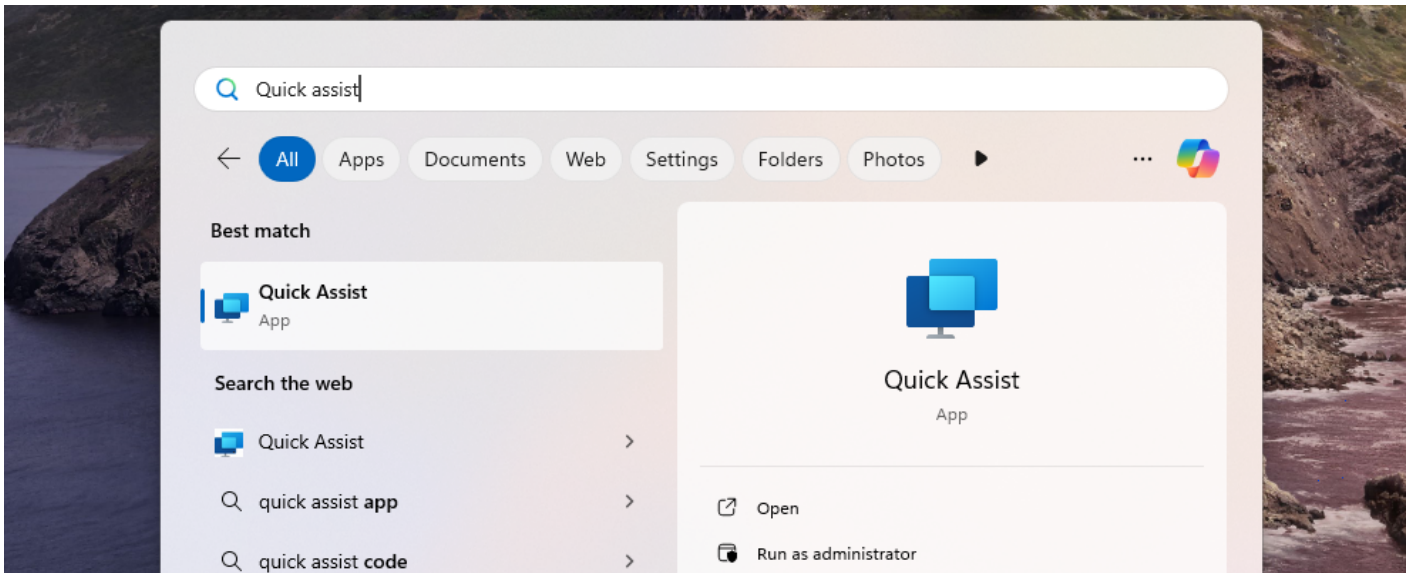
## 1. Open the Start Menu

Press the **Windows** key on your keyboard to bring up the Start Menu.



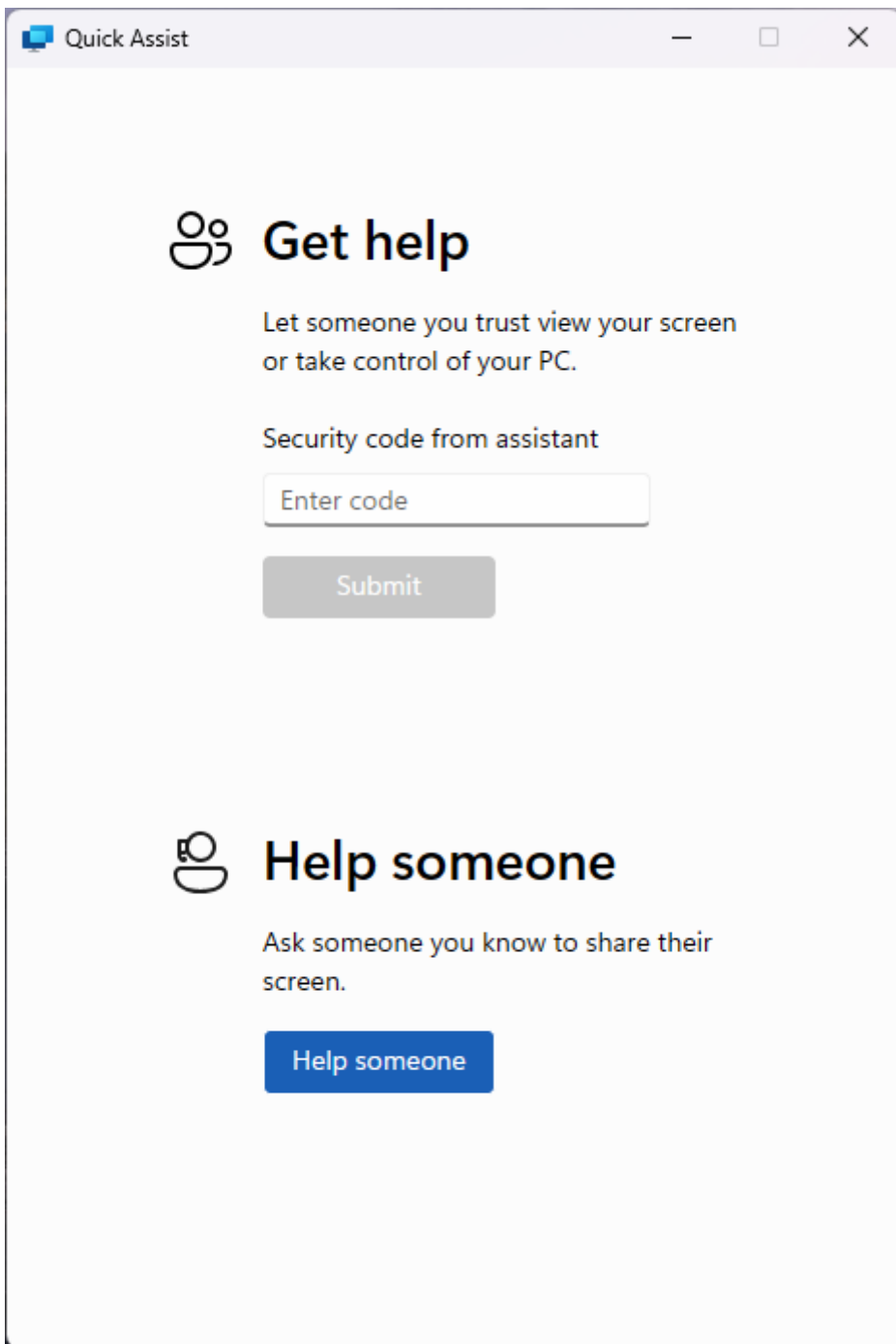
## 2. Search for Quick Assist

Type **Quick Assist** in the search bar, then press **Enter** to open it.



### 3. Enter the Support Code

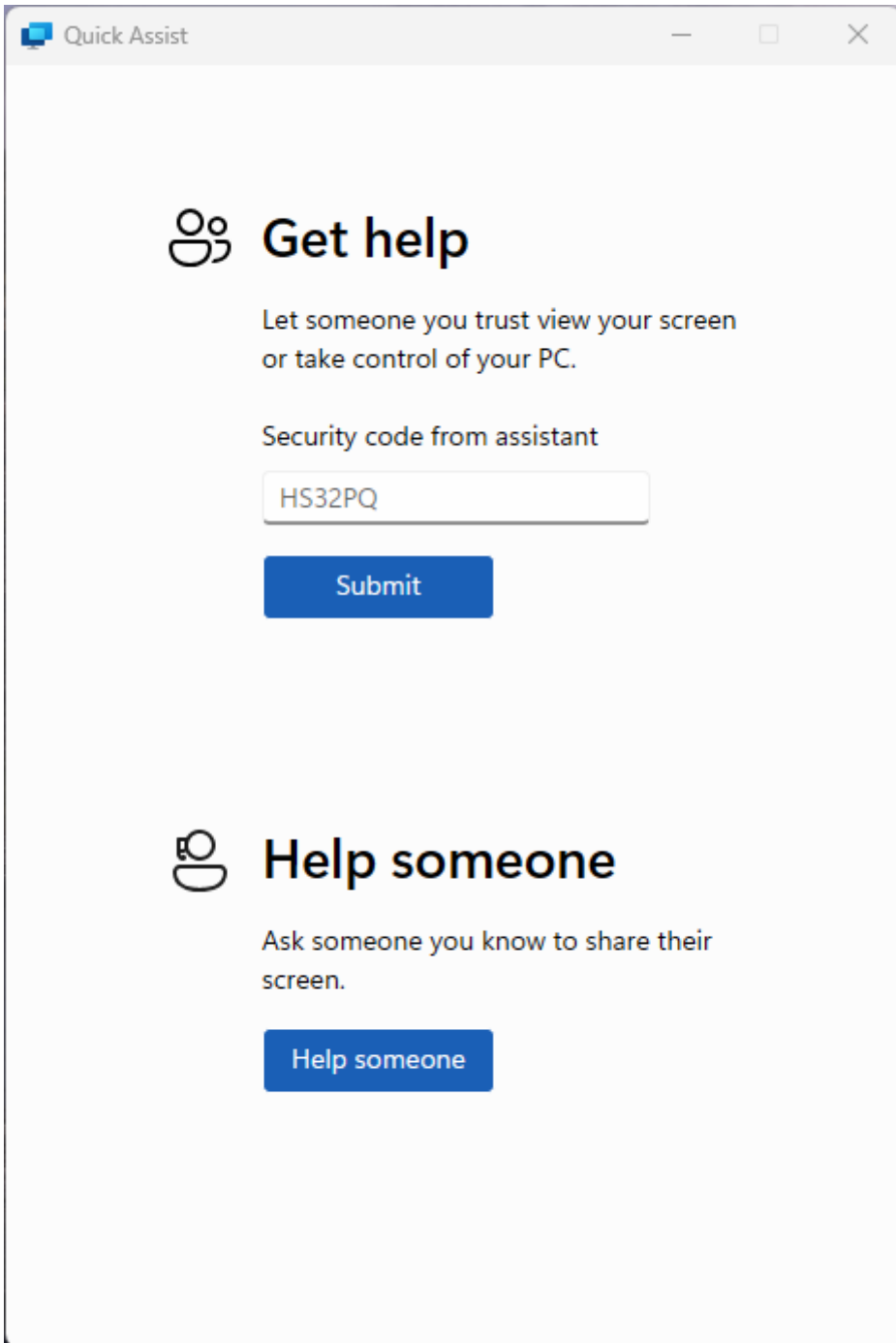
Once the Quick Assist window appears, you'll see a prompt asking for a code. Your IT support engineer will provide this code.



---

## 4. Submit the Code

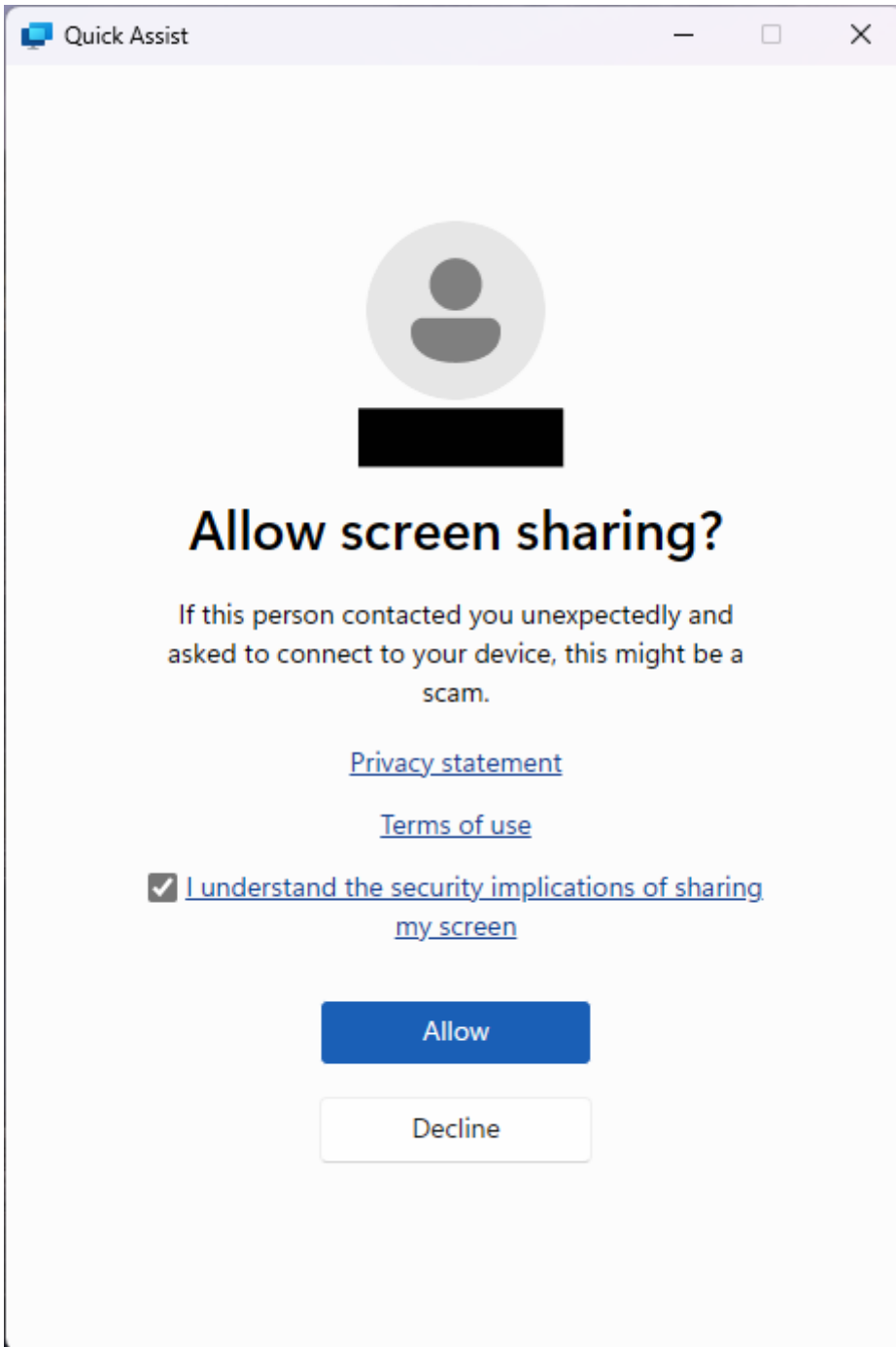
Type in the code and click **Submit** to initiate the remote session.



---

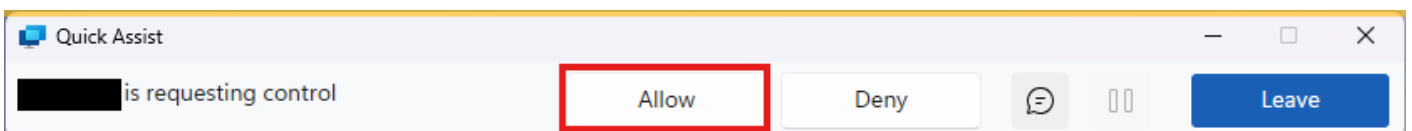
## 5. Accept the Remote Session

Quick Assist will go through a brief loading screen, followed by a prompt with a checkbox. Tick the box and click **Accept** to confirm the remote session.



## 6. Grant Control to the Support Engineer

Finally, your support engineer will request control of your machine. A toolbar will appear at the top of your screen. Click **Allow** to grant them control.



---

Revision #8

Created 25 November 2024 10:50:43 by Broadband9Admin

Updated 20 February 2026 13:51:12 by Broadband9Admin