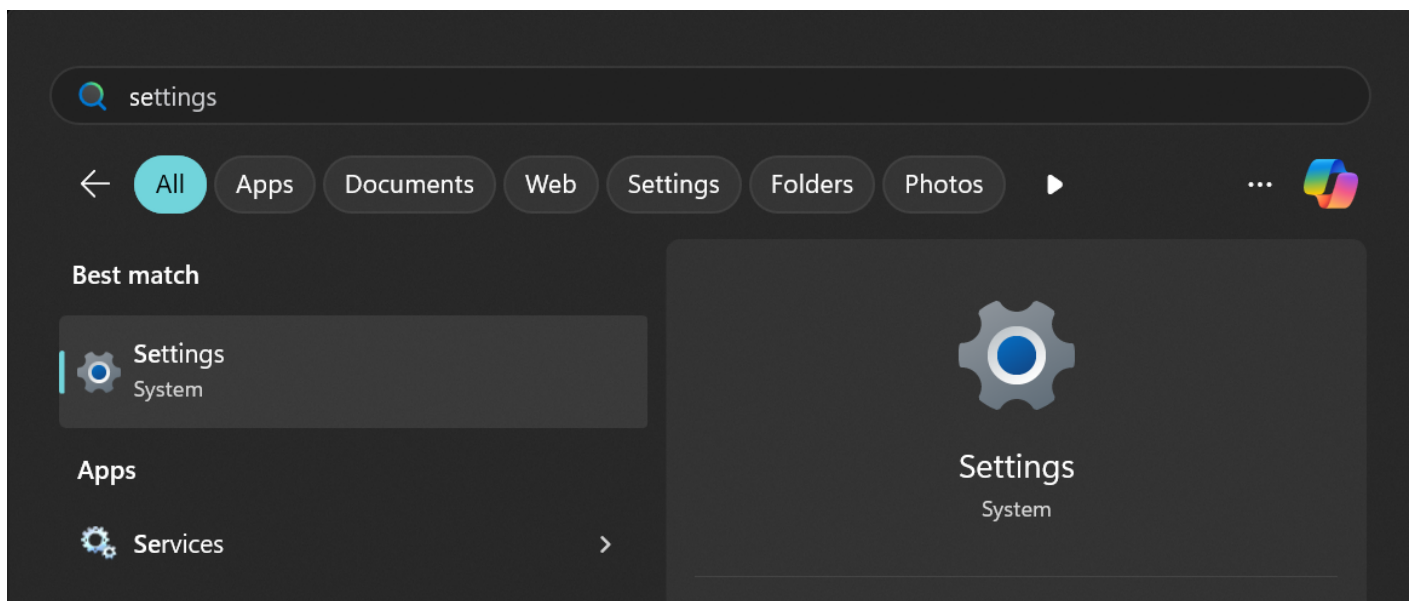


Windows: How to reset/Add a PIN

This article goes through resetting/ Adding a PIN for Windows 10/ 11

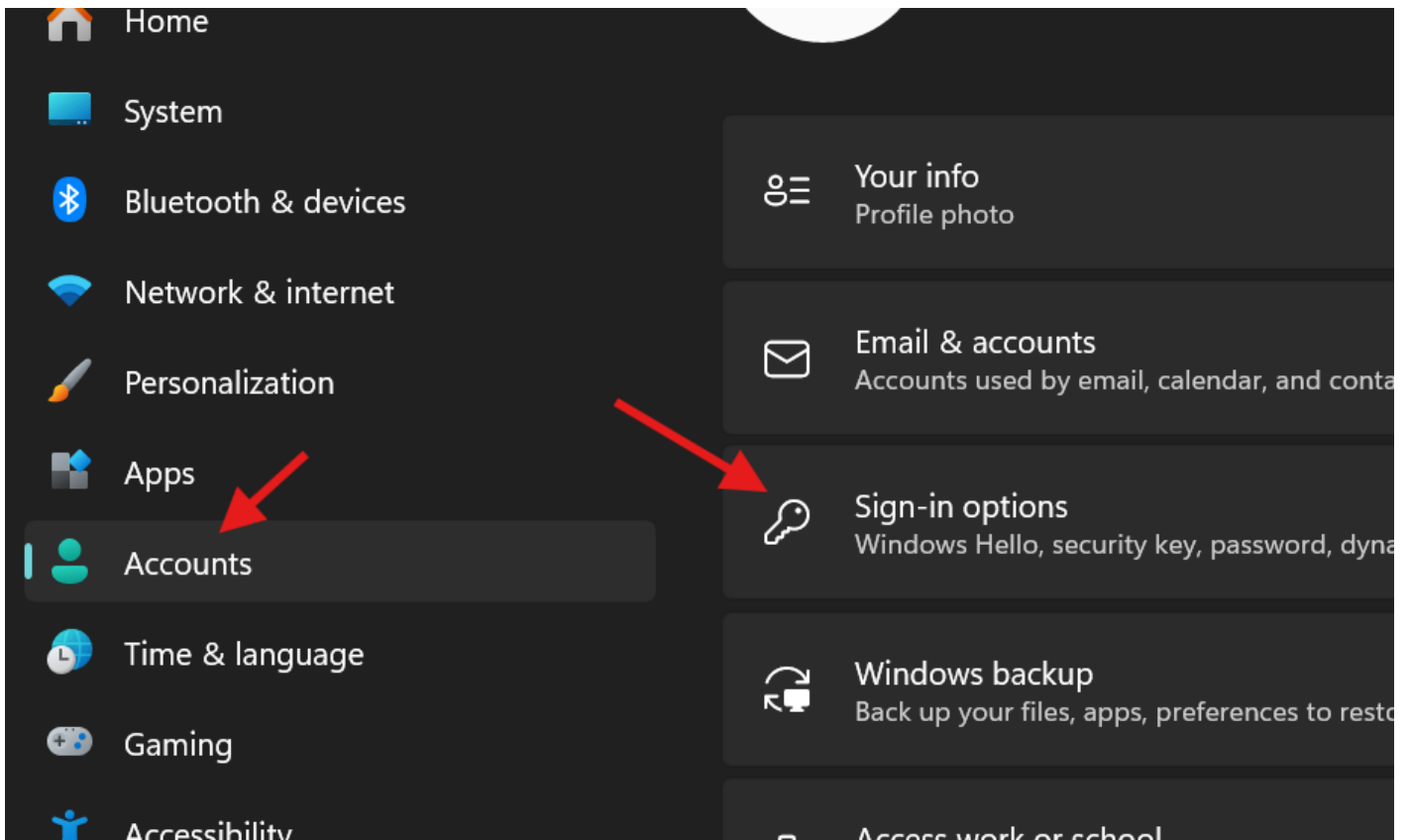
1. Open the Start Menu

Press the **Windows key** on your keyboard to bring up the Start Menu. search for Settings.



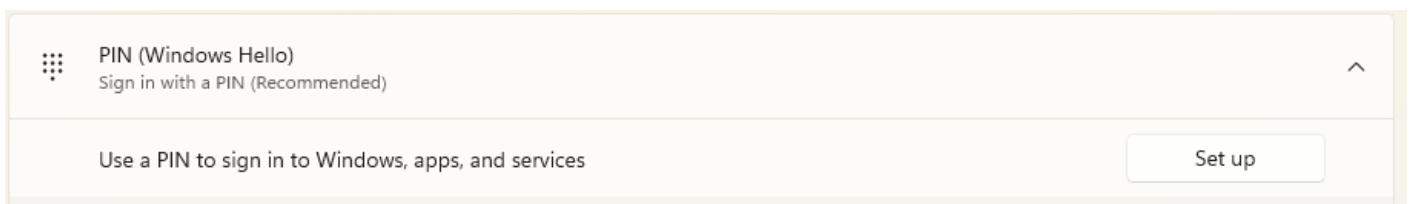
2. Open Accounts Tab

Inside the accounts tab find **sign-options**.



3. PIN (Windows Hello)

Click "**Set up**" and enter your Password. If you are resetting a PIN then click "**forgot PIN**".



4. Enter a PIN

Finally enter a PIN and OK when you are done.



Set up a PIN

A Windows Hello PIN is a fast, secure way to sign in to your device, apps and services.



New PIN

Confirm PIN

Include letters and symbols

OK

Cancel

Revision #3

Created 29 April 2025 09:14:20 by Broadband9Admin

Updated 7 May 2025 10:23:41 by Broadband9Admin