

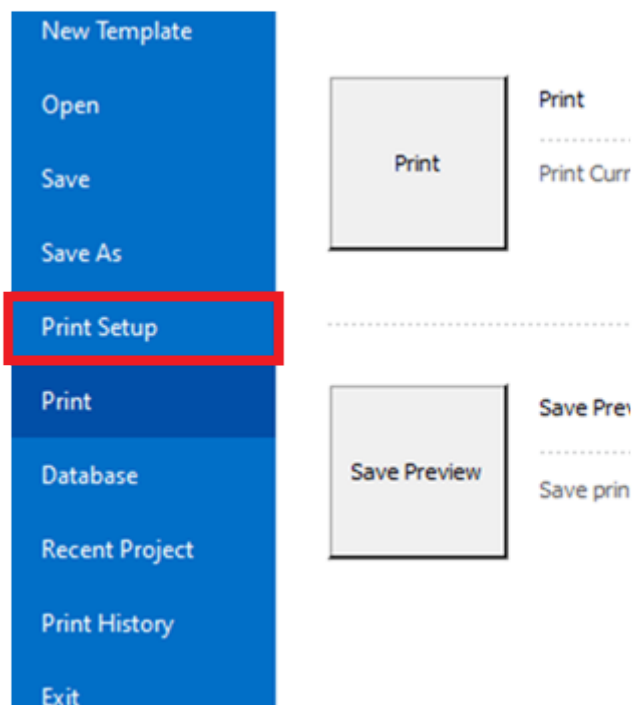
# SMART ID: How to print an ID Badge

How to print from the IDesigner for SMART ID Printers.

---

## 1. Open Print Setup

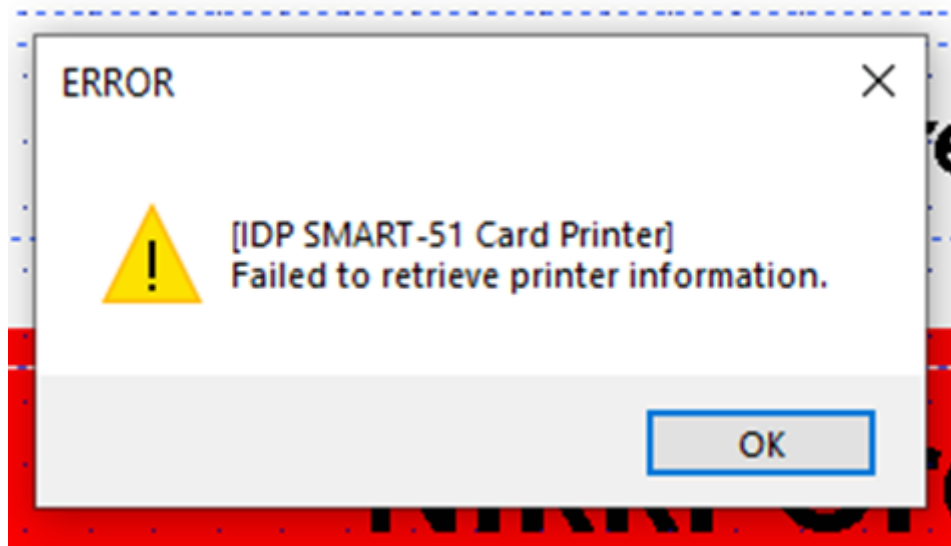
Top right of the screen click and open the file menu. then click **Print setup**.



---

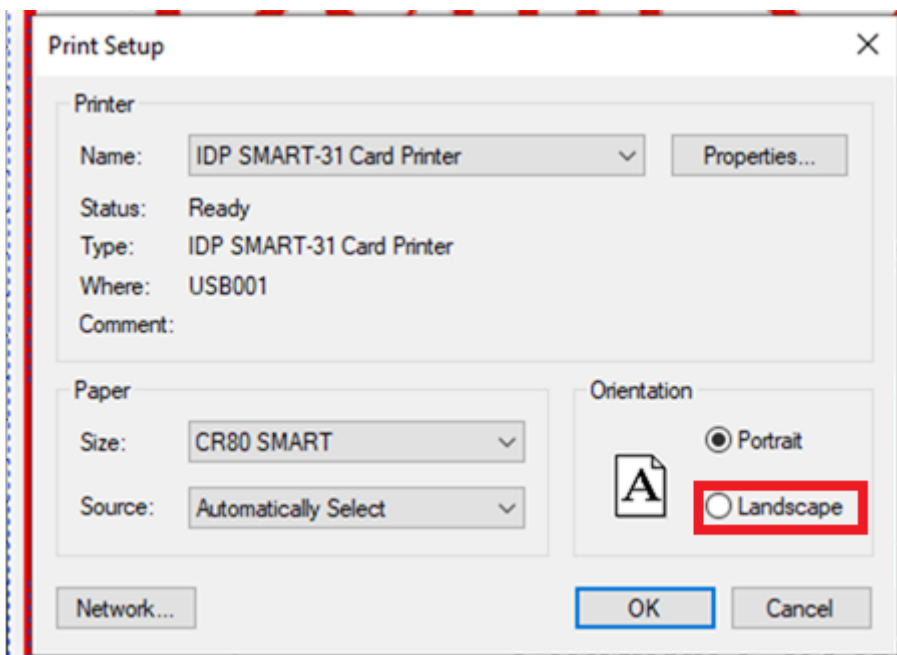
## 2. Ignore errors

Click okay on the errors until you see the printer setup prompt screen.



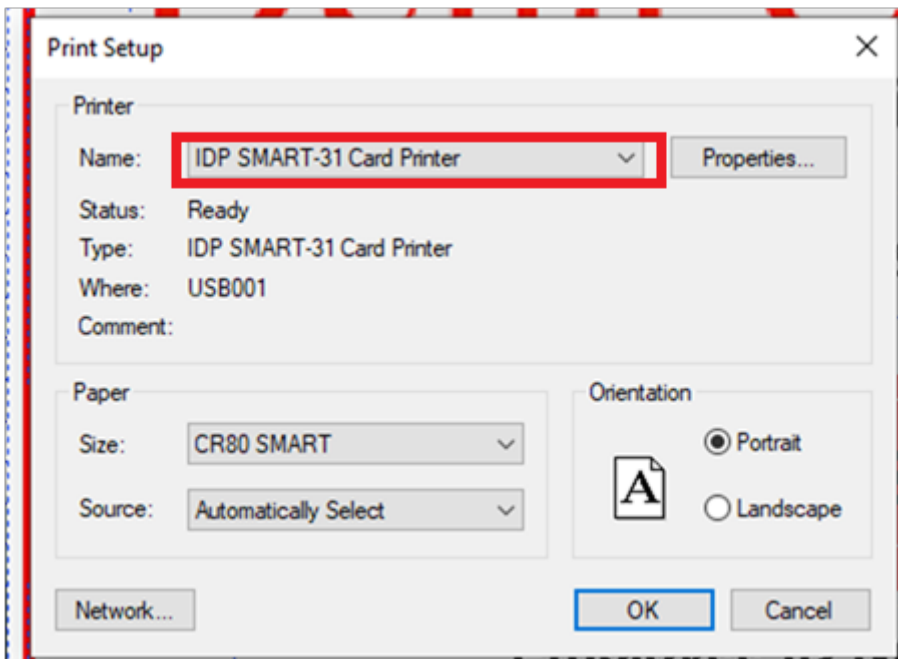
### 3. Set the right orientation

Choose the correct orientation.



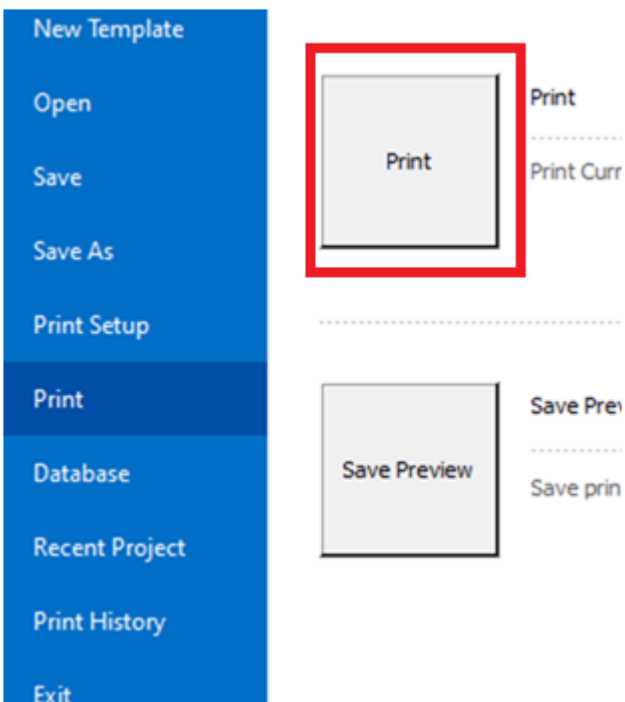
### 4. Choose the correct printer

From the drop down menu choose the IDP SMART 31 Card Printer, then click okay.



## 5. Print the Card

Again click on the file menu at the top right of screen. Now choose print menu and click the print button.



Revision #2

Created 22 May 2025 12:17:14 by Broadband9Admin

Updated 22 May 2025 12:28:48 by Broadband9Admin