

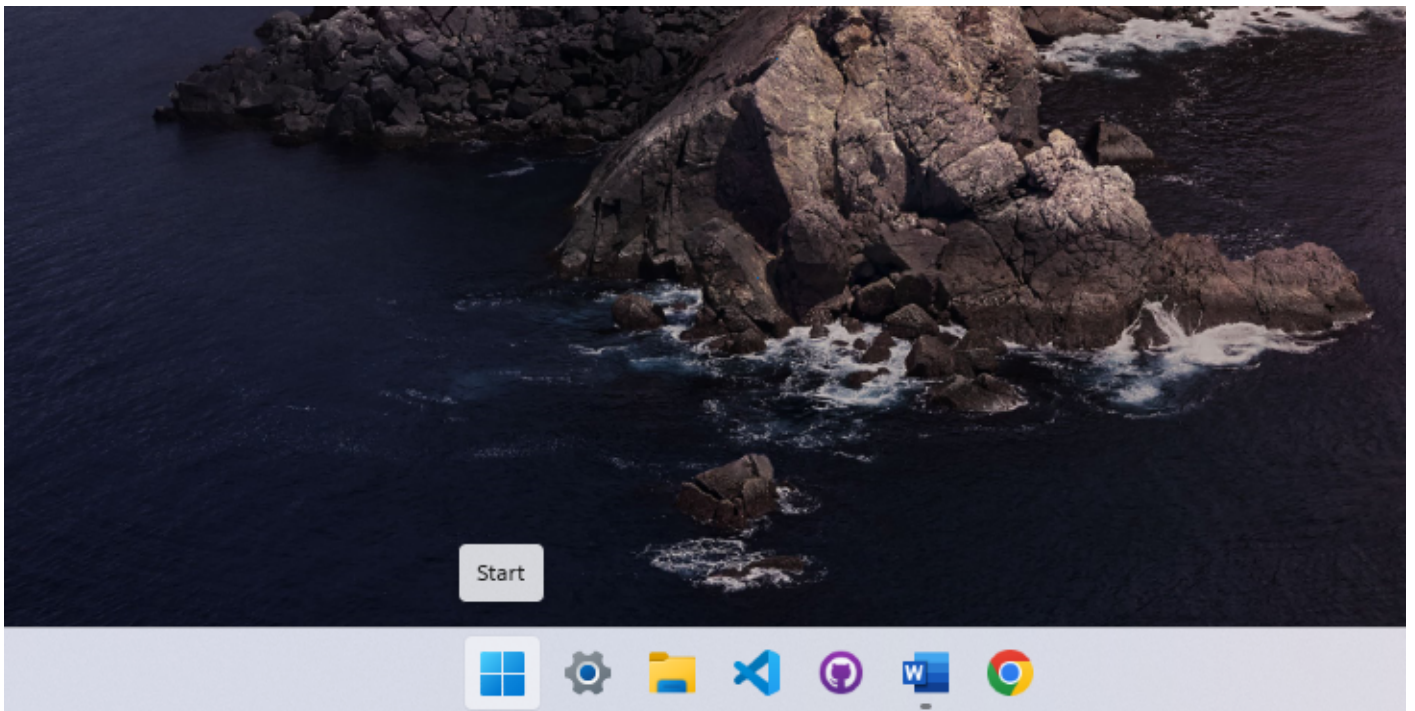
OpenVPN GUI: How to start a VPN connection

What will be covered:

- How start the OpenVPN Application
- How to start a VPN Connection

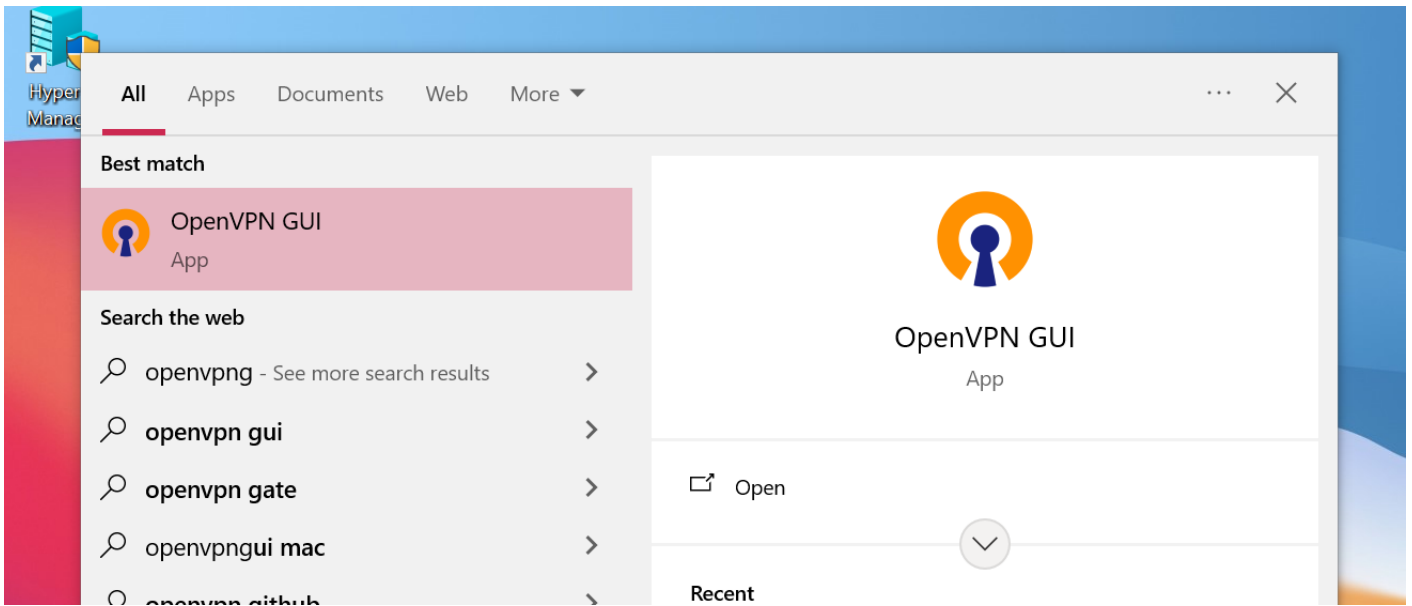
1. Open the Start Menu

Press the **Windows** key on your keyboard to bring up the Start Menu.



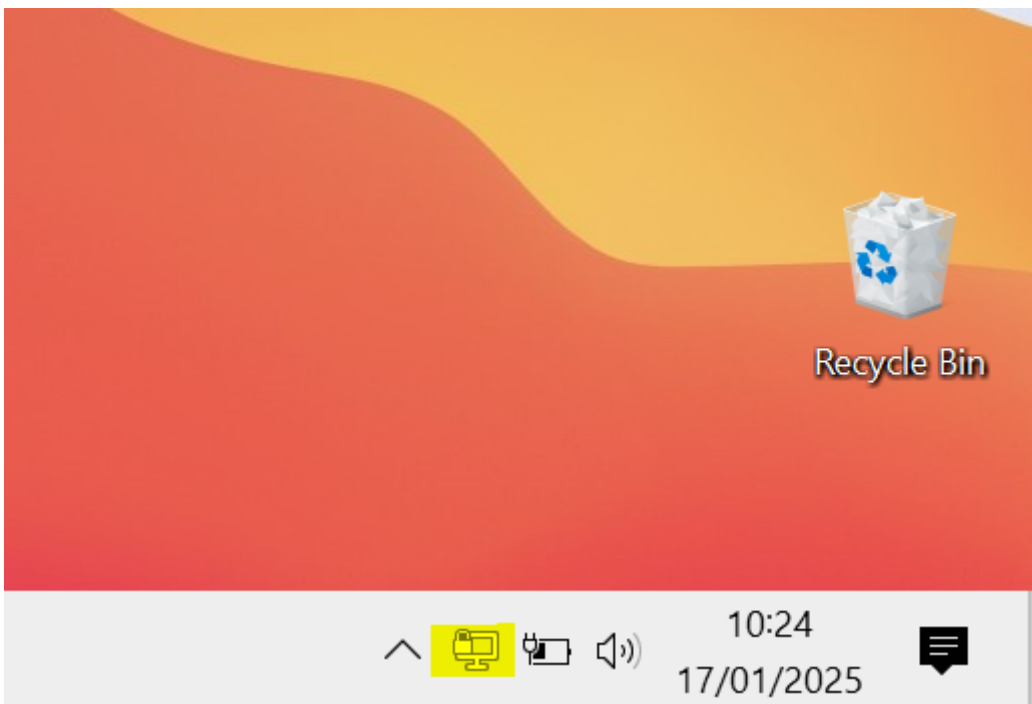
2. Search for OpenVPN GUI

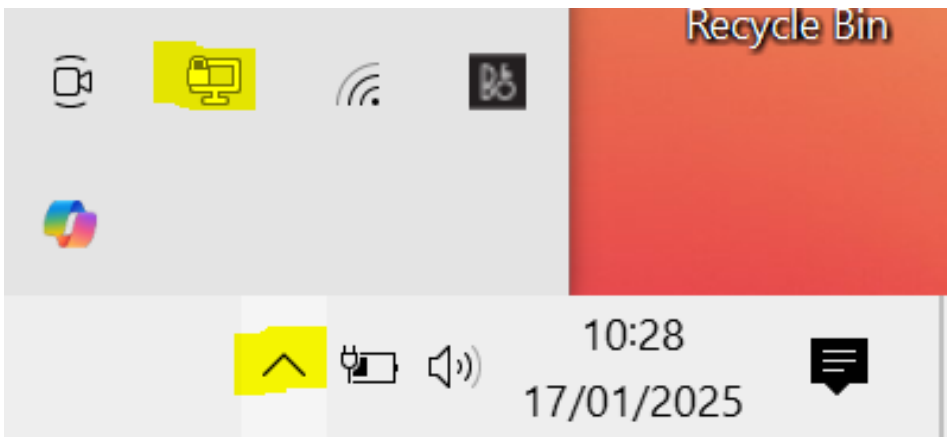
Type **OpenVPN** in the search bar, then press **Enter** to open it.



3. Open the VPN Application

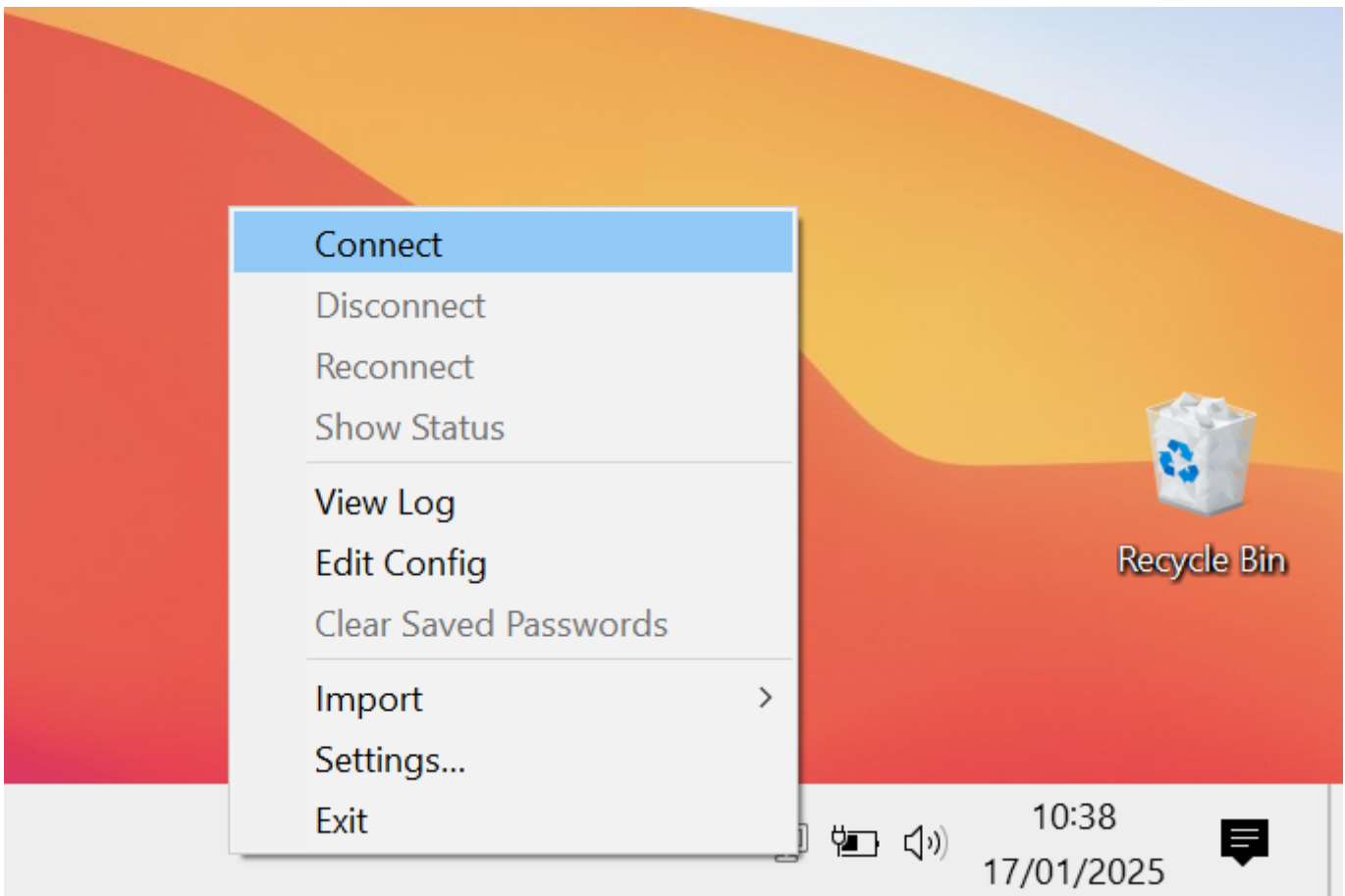
Once **OpenVPN** has started a desktop icon with lock should appear **bottom right** of your screen. If you are unable to see it, navigate to the up-arrow menu icons and drag it down to the taskbar. **Right Click the icon to open the OpenVPN Menu.**





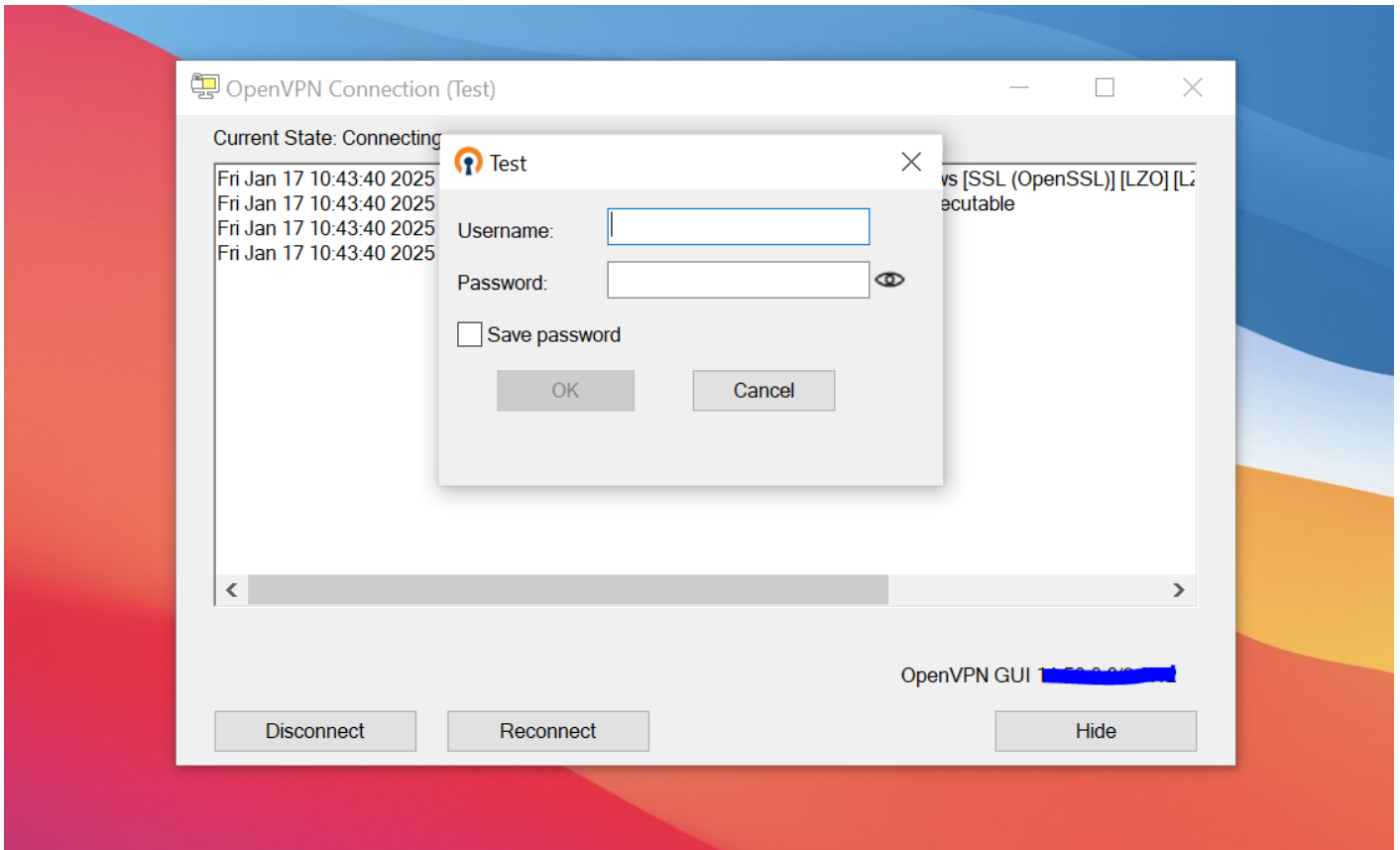
4. Check available VPN connections

A VPN connection should all-ready be available to connect to. If no VPN connection are present then contact IT support.



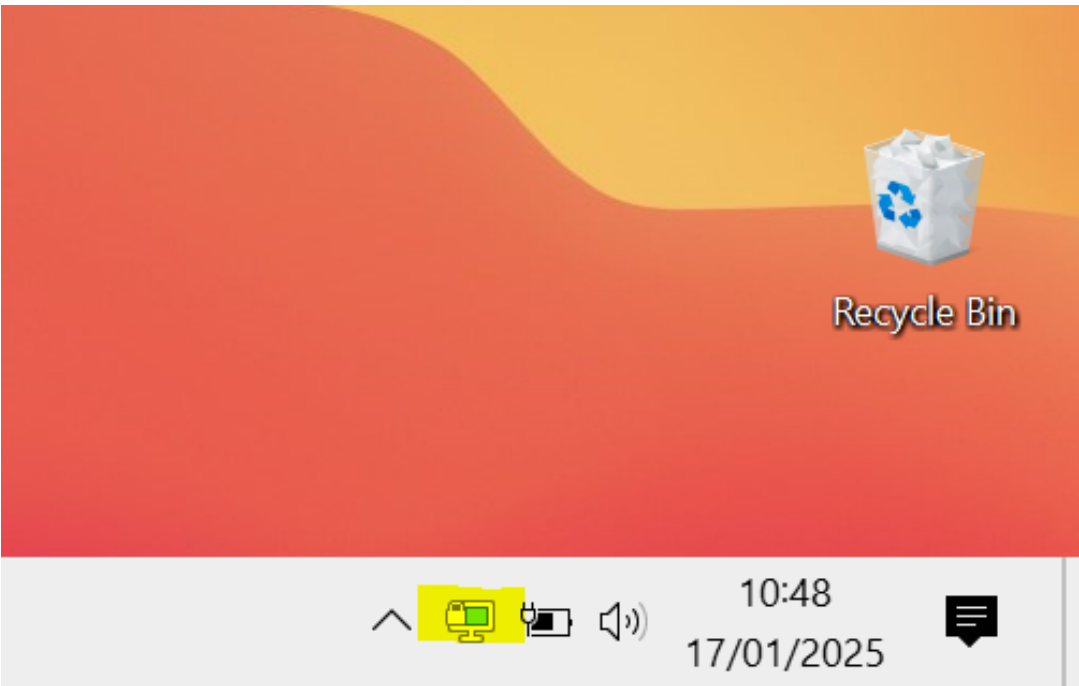
5. Connect to a VPN

Right click the VPN connection and click connect on the new menu that appears. It should ask you for authentication before a VPN link can be established. This would of been provided by your MSP.



6. Verify connection

Finally, after the connection has been successful, you should be notified that the connection has been established. You should also see the Icon changing to green.



Revision #7

Created 17 January 2025 09:36:12 by Broadband9Admin

Updated 12 August 2025 14:26:14 by Broadband9Admin