

SMART ID Printer

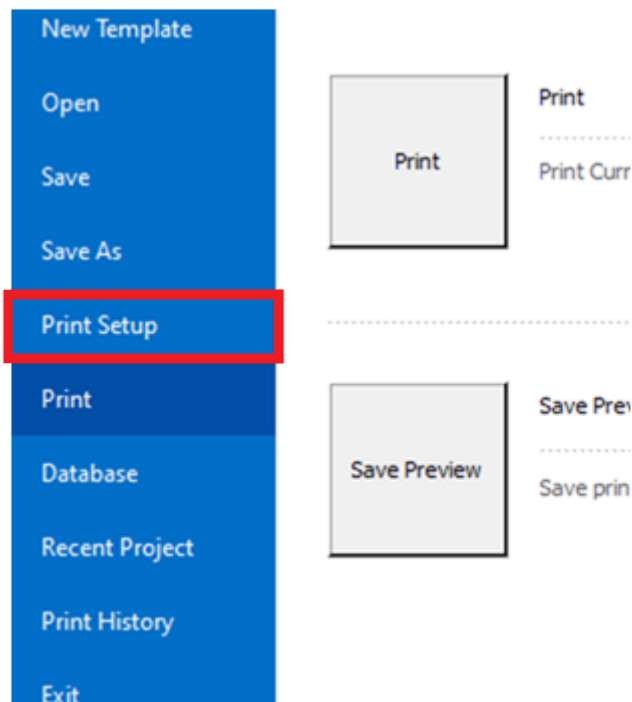
- [SMART ID: How to print an ID Badge](#)

SMART ID: How to print an ID Badge

How to print from the IDesigner for SMART ID Printers.

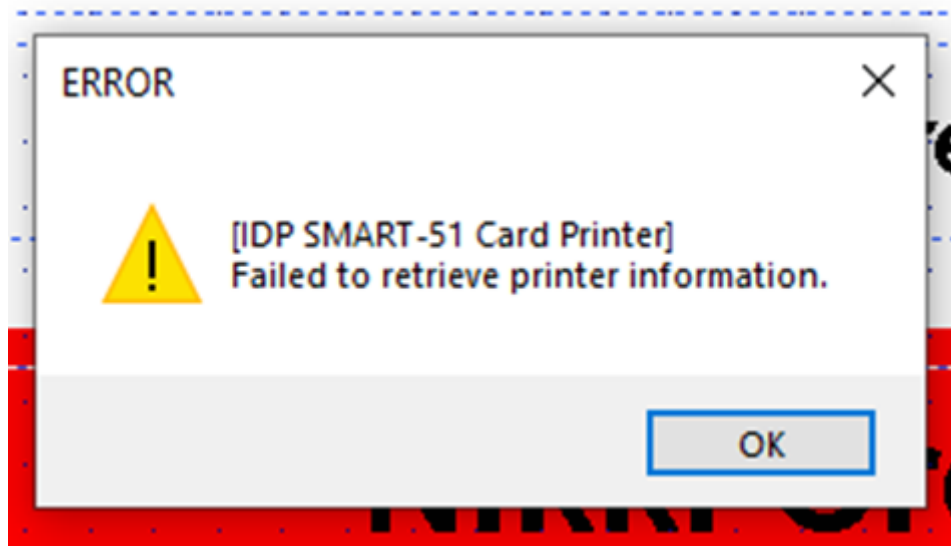
1. Open Print Setup

Top right of the screen click and open the file menu. then click **Print setup**.



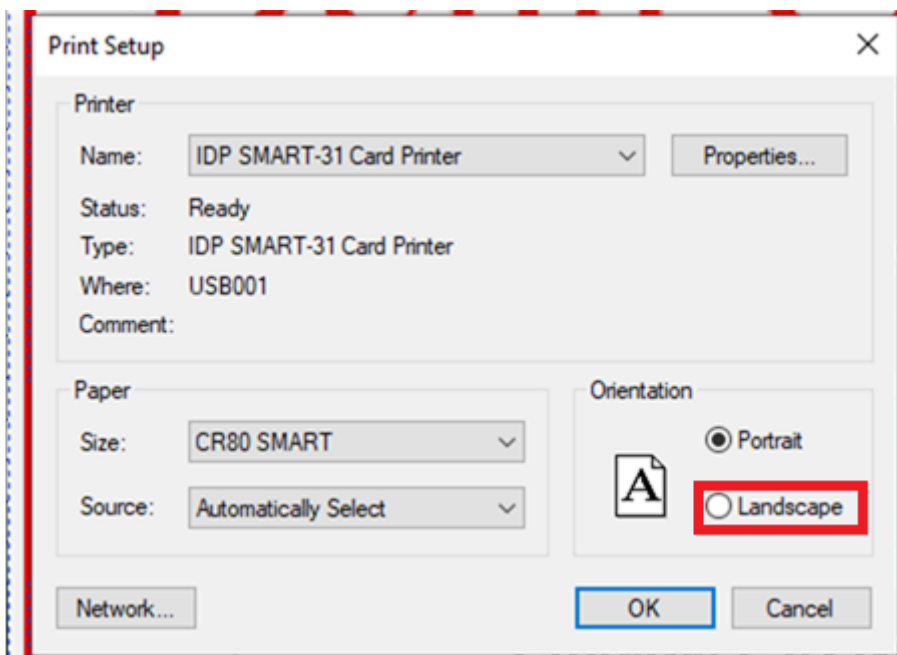
2. Ignore errors

Click okay on the errors until you see the printer setup prompt screen.



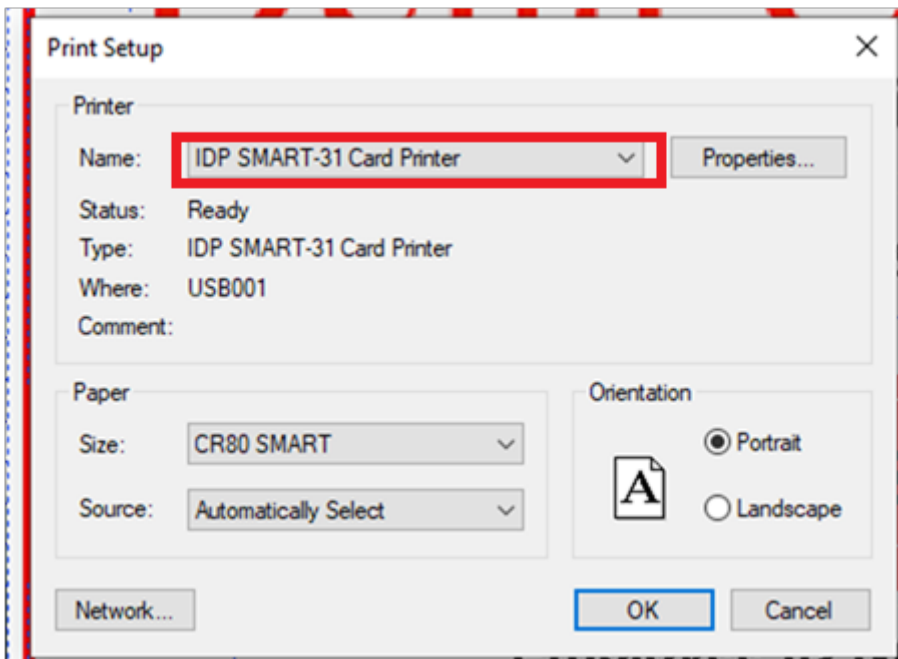
3. Set the right orientation

Choose the correct orientation.



4. Choose the correct printer

From the drop down menu choose the IDP SMART 31 Card Printer, then click okay.



5. Print the Card

Again click on the file menu at the top right of screen. Now choose print menu and click the print button.

